

LAQUA

Quick Guide

LAQUA 200 Series
DO210/220 & PD210/220
Handheld Meters



www.horiba-laqua.com

HORIBA
Scientific

Dissolved Oxygen Calibration & Measurement

1. Rinse the DO electrode with clean water and blot dry with lint-free tissue.

There should be no water droplets on the membrane and the temperature sensor.



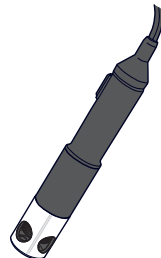
2. Hold the DO electrode still in clean air.

Perform air calibration in clean air at a location not subjected to dramatic temperature change, rain, or direct wind.

Two calibration modes are available in the DO meter:

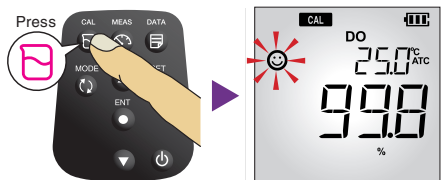
1. DO saturation mode mode (%)
2. DO concentration mode (mg/L)

The default mode is the former. Press MODE button to switch to the latter.



3. Press CAL button on the meter to switch to calibration mode.

The ☺ will start blinking until the reading stabilizes.

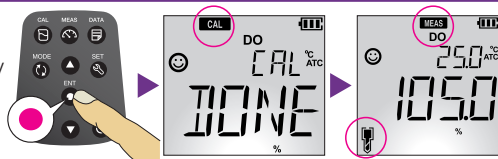


4. Press ENT button to confirm the DO reading. To abort calibration, press MEAS button.

The meter will switch to measurement mode and the electrode icon will appear on the screen.

The DO electrode responds slightly differently to atmospheric air as compared to water.

As such, 100% calibration in air will shown approximately 105%.



5. Immerse the DO electrode in zero solution (2 g/L sodium sulfite solution) and repeat step nos. 3 - 4 to perform zero calibration (optional).

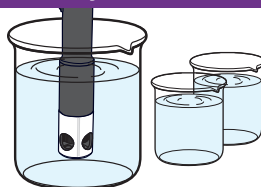
Make sure that the membrane and the temperature sensor of the DO electrode are fully immersed in the zero solution.

In step no. 3, CAL button must be pressed twice so that the meter will switch to zero calibration mode.

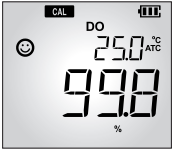
6. Rinse the DO electrode with clean water and blot dry with lint-free tissue.

7. Immerse the DO electrode in sample.

Make sure that the membrane and the temperature sensor of the DO electrode are fully immersed in the sample.



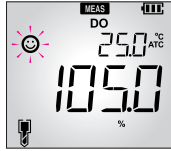
Dissolved Oxygen Calibration



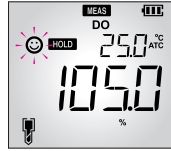
Dissolved Oxygen Calibration Data



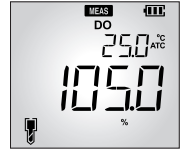
Measurement Modes



Auto Stable



Auto Hold



Real Time



Dissolved Oxygen Setup



P4 CLK*

- P4.2 TIME - Set time
- P4.1 DATE - Set date



P3 GEN

- P3.4 RSET - Reset meter
- P3.3 °C/°F - Select temperature unit
- P3.2 A.OFF - Set auto shut-off time
- P3.1 STBL - Select measurement mode



P2 DATA

- P2.3 D.CLR - Erase data log
- P2.2 PRNT - Print data log
- P2.1 LOG - Set data log interval

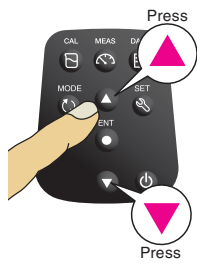


P1 PH

- P1.3 C.CLR - Erase CAL data
- P1.2 PRES - Enter barometric pressure
- P1.1 SAL - Enter salinity value



Press up or down buttons to scroll through settings



Press ENT button to confirm settings



*Available in 220 models only